

As exclusive sublease agents, Studley is pleased to offer the following prime office space for sublease:

BRAND-NEW, SUPER HIGH-END, BUILT AND FURNISHED SPACE UNOBSTRUCTED VIEWS OF CENTRAL PARK AND THE EAST RIVER

FLOOR / AREA (RSF)

Partial 51st / 10,550

POSSESSION

Immediate

RENTAL RATE

Negotiable

TERM

Through November 30, 2015

FEATURES

- Space was built in 2010 to a very high standard with stone floor in the reception area, two interior conference rooms, one windowed conference room with unobstructed views of Central Park, 15 offices including an executive sized corner office, six person trading desk, 18 workstations, pantry, IT room and storage/copy/mail room
- Supplemental cooling in the IT room, conference rooms, executive/corner office and trading area
- Plug and Play Opportunity – Furniture can remain in place
- Incredible views of Central Park and the East River
- World Class Property – Column Free Space
- Access to the Subway and Concourse from the Building Lobby

For more information and inspection, please contact:

Lance Leighton

Assistant Director

(212) 326-8668

lleighton@studley.com

Evan Margolin

Senior Managing Director

(212) 326-8623

emargolin@studley.com



Studley

601 Lexington Avenue
10,550 RSF AVAILABLE

As exclusive sublease agents, Studley is pleased to offer the following prime office space for sublease:



For more information and inspection, please contact:

Lance Leighton

Assistant Director

(212) 326-8668

lleighton@studley.com

Evan Margolin

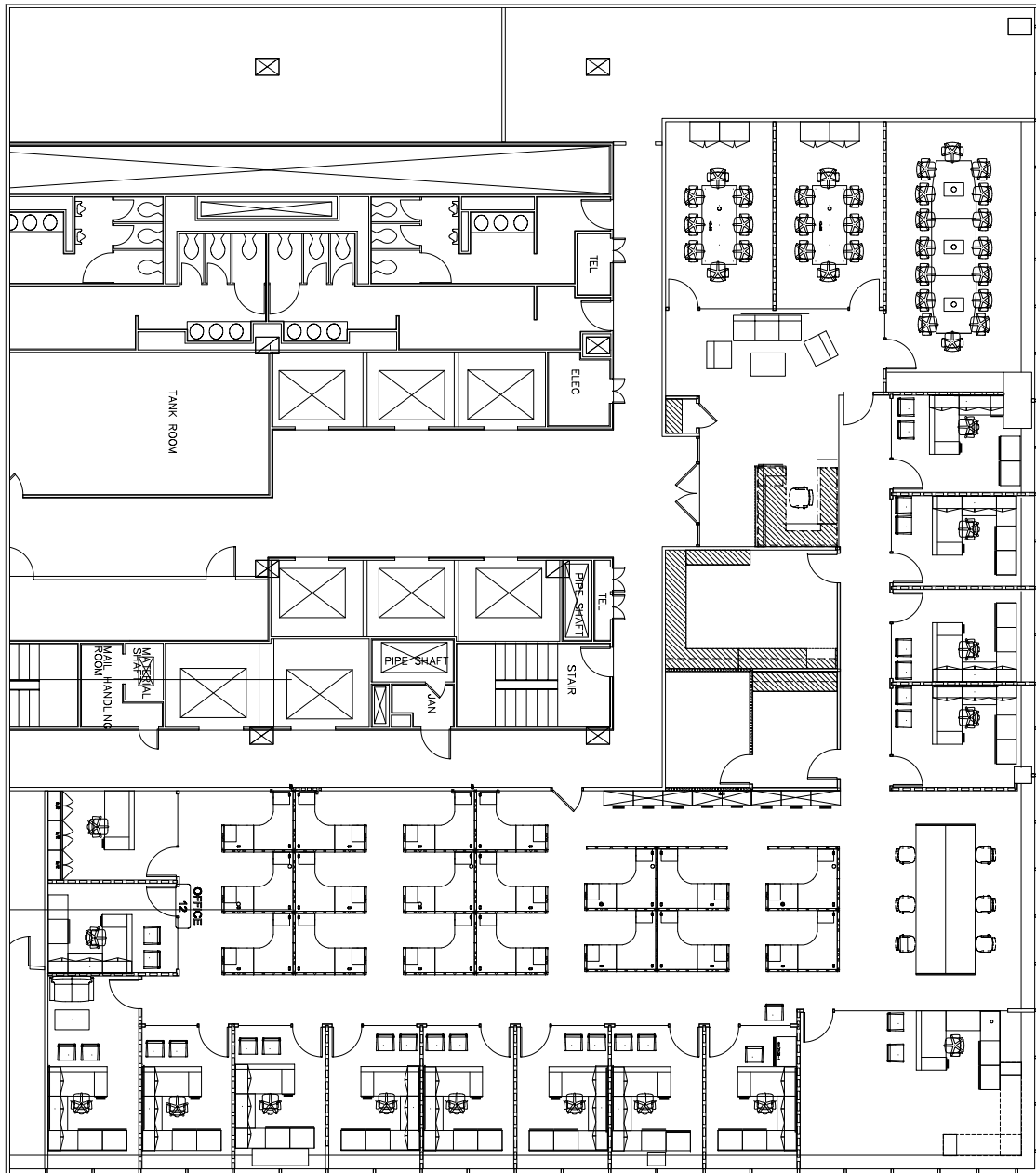
Senior Managing Director

(212) 326-8623

emargolin@studley.com

All information furnished regarding property for sale, rental or financing is from sources deemed reliable. No presentation is made as to the accuracy thereof and it is submitted to errors, omissions, change of price, rental or other conditions, prior sale, lease or financing, or withdrawal without notice

As exclusive sublease agents, Studley is pleased to offer the following prime office space for sublease:



For more information and inspection, please contact:

Lance Leighton

Assistant Director

(212) 326-8668

lleighton@studley.com

Evan Margolin

Senior Managing Director

(212) 326-8623

emargolin@studley.com